



SALVADORAN
AMERICAN
HUMANITARIAN
FOUNDATION

2025

ANNUAL IMPACT REPORT

Table of Contents

43 Years of Lasting Change	3
About Us	4
Reflections from our President	5
Leadership & Governance	6
Our Mission and Vision	6
Context Snapshot	7
2025 Impact	8
Program Highlights	9

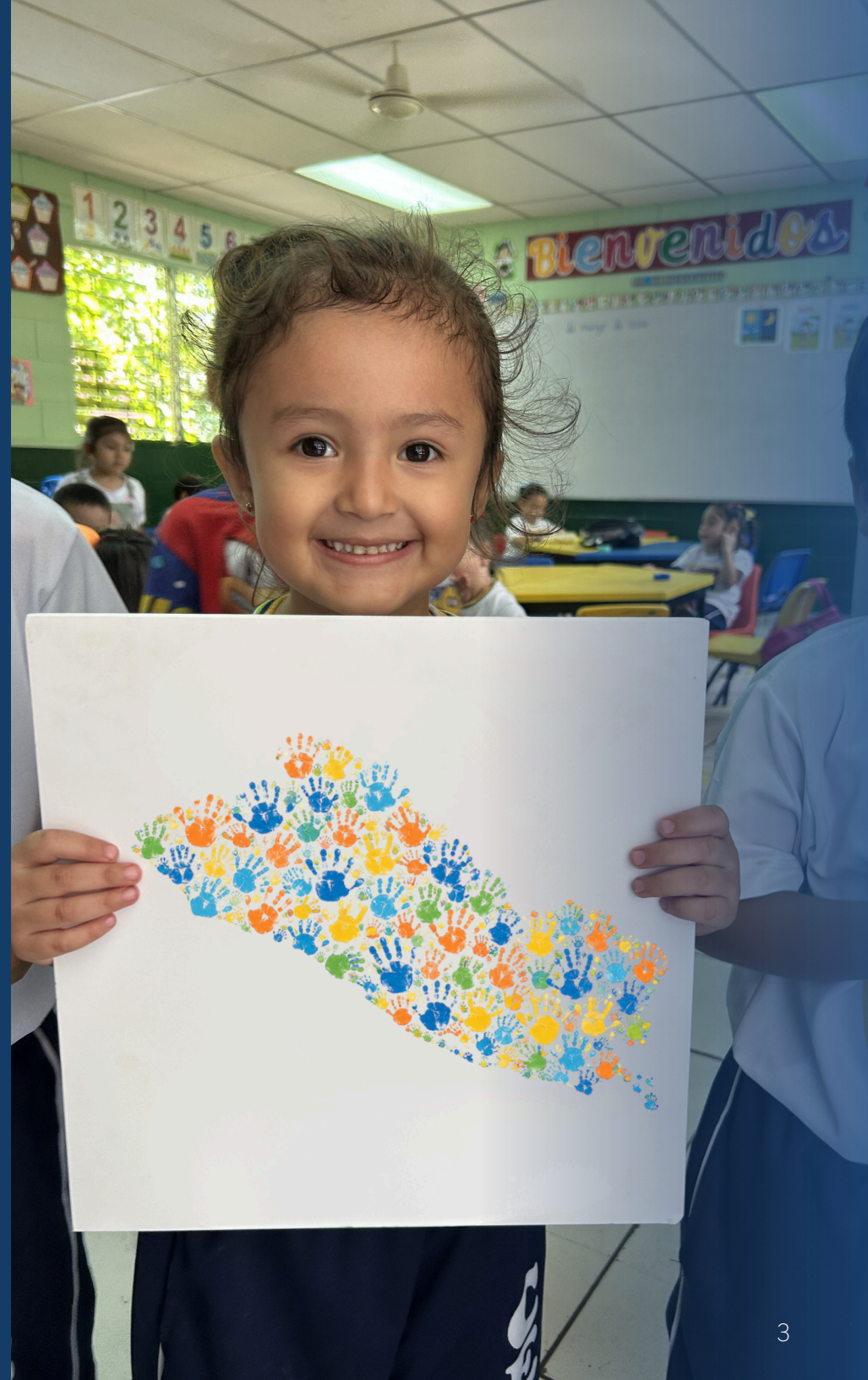


43 Years of lasting change

For 43 years, the Salvadoran American Humanitarian Foundation (SAHF) has transformed generosity into lasting impact, delivering health, nourishment, education, and hope to communities across El Salvador. Founded in 1983, SAHF is a Miami-based nonprofit committed to expanding opportunity for underserved children and families.

Through the support of partners across the United States and in collaboration with our sister organization, FUSAL, SAHF mobilizes essential resources that strengthen health, nutrition, education, and community well-being.

As we reflect on more than four decades of service, we remain grateful for the partners and supporters who make this work possible and help create lasting change for generations to come.



Reflections from our President

Dear Friends and Generous Supporters:

In March of this year, I, and other board members, had the opportunity to visit El Salvador and witness firsthand the impact of the programs and partnerships that make our mission possible. From meeting children and families in our communities to seeing the dedication of volunteers, educators, and local leaders, I was reminded that behind every statistic is a person whose life has been touched by the generosity of our supporters.

The experiences I witnessed reinforced what has guided the Salvadoran American Humanitarian Foundation for more than four decades: lasting change is built through partnership, commitment, and a shared belief in human dignity. Thanks to your support, we continue to connect resources, expertise, and compassion with communities across El Salvador, creating opportunities for children, families, and future generations.

In 2025, your support helped extend our reach to more than 118,000 Salvadorans through programs that strengthen health, nutrition, education, emergency response, and community development. Thanks to the generosity of our donors and in-kind partners, SAHF secured and facilitated the shipment of more than \$64 million in life-changing humanitarian aid. Through our sister foundation, FUSAL's program implementation, these resources reached communities across El Salvador, creating opportunities for children and youth and strengthening the resilience of families facing ongoing challenges.

While the needs remain significant, so does the commitment of those who stand beside us. Every shipment delivered, every meal provided, every child supported, and every partnership strengthened reflects a shared belief that lasting change is possible when we work together.

As we look to the future, we remain dedicated to advancing dignity, opportunity, and well-being for the people of El Salvador. On behalf of our Board of Directors, and dedicated staff, thank you for your trust, generosity, and partnership. Your support continues to transform lives and create opportunities for generations to come.

With sincere gratitude,



José Eduardo Simán
President Board of Directors

Our Board of Directors

SAHF EXECUTIVE BOARD

José Eduardo Simán - President
Ernesto Poma - Vice President
William Freund - Treasurer
Magda Lie-Nielsen - Secretary

DIRECTORS

Alejandra Abusada
León R. Ávila
Federico Cuadra
Salvador Escalon
Raúl Henríquez
María Nazari
Alfredo Samayoa
Daniel Schwartz
Matilde Siman
Julio Villafañe

Vision

We are working towards a future where all citizens of El Salvador can meet their basic human needs.

Mission

To enhance the wellbeing of the underserved people in El Salvador through human development programs implemented in partnership with our in-country sister Foundation, FUSAL, and other organizations.

Our In-Kind Partners












2025 Impact

116,749
Salvadorans




22,835
Children & Youth*



109
Beneficiary
Organizations
served




14 States
31 Municipalities
56 Districts

57 Shipments sent:



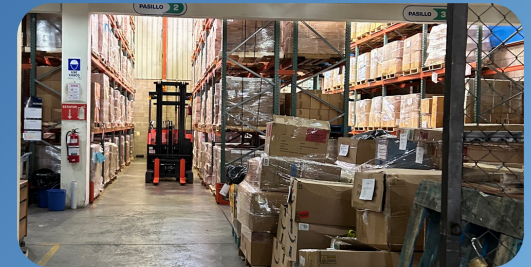
48 40' Ft. Ocean Containers



9 Air Shipments

\$64,658,258

in life-changing humanitarian aid sent



OUR PROGRAMS IN ACTION IN 2025



WeSUPPORT

Expanding access to essential resources across El Salvador, with the support of our committed in-kind partners. Donations secured in the United States reach an extensive network of hospitals, clinics, children's homes, senior care centers, libraries, and community-based organizations throughout all 14 states.



WeNOURISH

Advancing early childhood health through nutrition and caregiver support – 6,265 children served.



WeEMPOWER

Equipping youth with education, English skills, and career pathways. Nearly 2,300 students reached.



WeAID

Providing rapid emergency relief to vulnerable families. 37 emergency kits valued at over USD 15,000 were delivered to four rescue institutions in El Salvador.



WePARTNER

Strengthening local NGO's through more than \$1 Million in donor-funded grants.

* Reached across FUSAL programs, including SAHF-supported initiatives

2025 Highlights from SAHF Programs



WE Nourish | Early Childhood Development Program

- **1,870 children under age 5** received nutrition and food security support.
- **175 pregnant women** received support for nutrition and prenatal stimulation
- **165 Nutripuntos active** across 23 districts
- **83% of children under 2** are free from malnutrition

Literacy Program Lee Conmigo

- **1,100** children
- **565** parents actively participate in the program
- **143** volunteers mentoring and tutoring children.
- **84** community reading circles across 18 districts



2025 Highlights from SAHF Programs

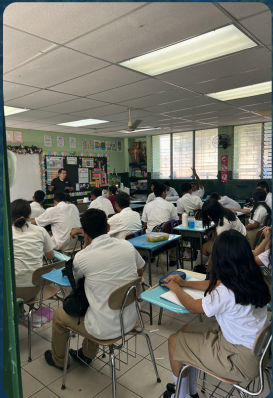


English Program

- **1,200 children** from Kindergarten to High School learned English as a second language
- **80%** developed mid-level English language skills

Sports & Values Development

- **236 children and youth** participated
 - 44% improvement in social skills
 - 57% increase in leadership



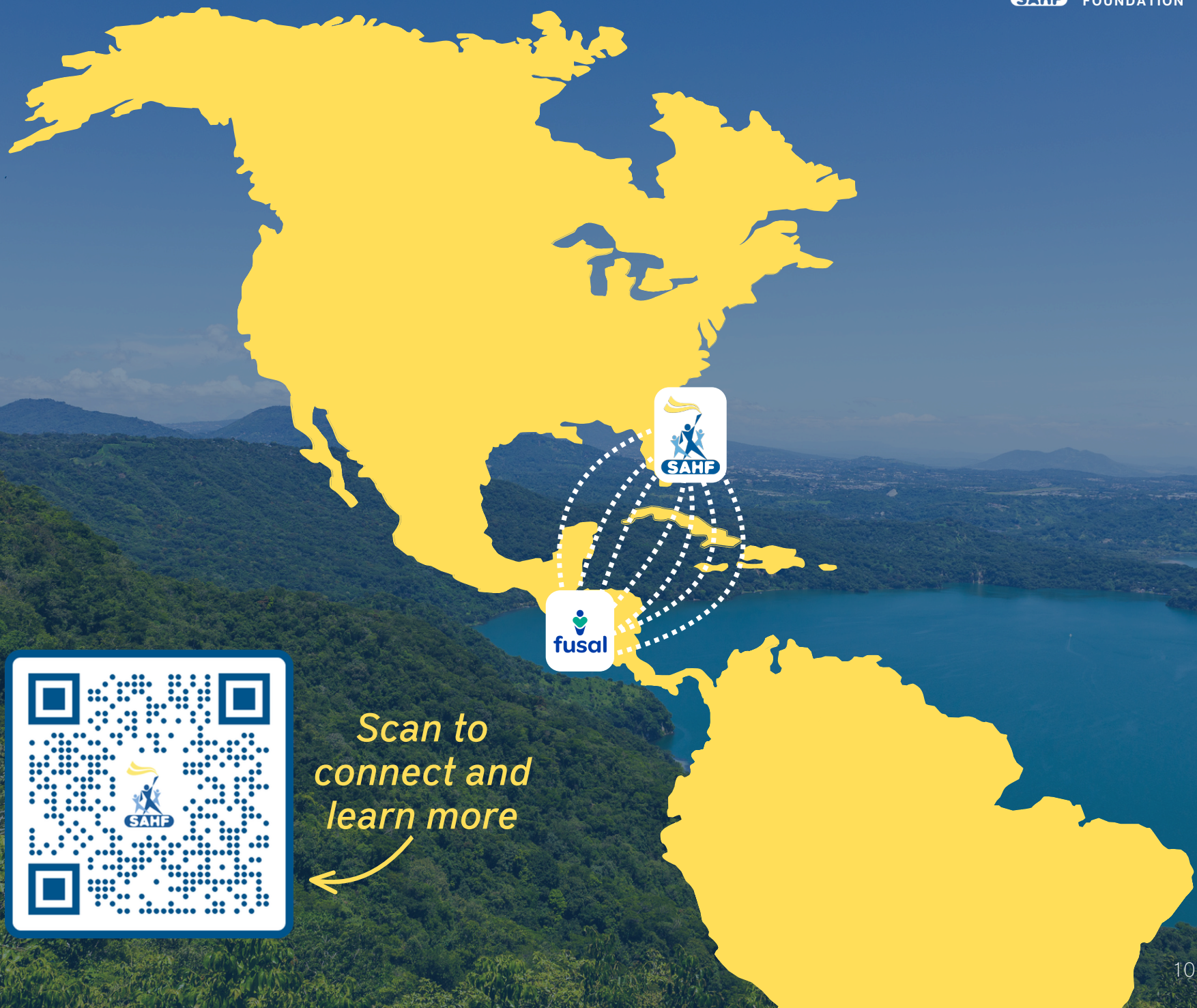
Life Plan & Career Development

- **587 students** developed life plans, receiving guidance to define their goals and access opportunities for academic and professional development.
 - 4 students at ESEN University (Leading business school)
 - 24 young women at ESEN Youth Leaders Program
 - 33 students in internships at Hotel Real Intercontinental

Strengthening Healthcare

- Facilitated access to medicines for rare and chronic conditions, including:
 - Hemophilia
 - Cystic fibrosis
 - Diabetes
 - Cardiac conditions





*Scan to
connect and
learn more*

